



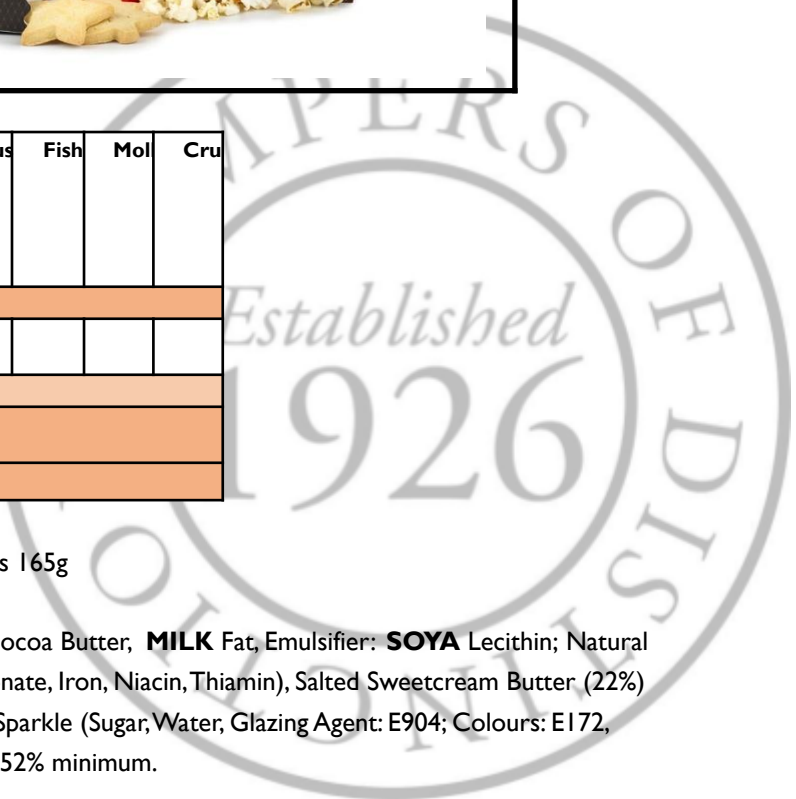
Glut	Soy	Pea	Nut	Sesa	Lup	Milk	Egg	Sulp	Cel	Mus	Fish	Mol	Cru
Mandatory allergens contains:													
✓	✓	✓	z	z		✓	z	✓	✓	z			
Key													
✓	Listed in ingredients												
z	May contain traces												

Product Name: Grandma Wild's Dark Chocolate Shortbread Trees 165g

Ingredients: Dark Chocolate Coating (33%) (Cocoa Mass, Sugar, Cocoa Butter, **MILK** Fat, Emulsifier: **SOYA** Lecithin; Natural Vanilla Flavouring), **WHEAT** Flour (**WHEAT** Flour, Calcium Carbonate, Iron, Niacin, Thiamin), Salted Sweetcream Butter (22%) (Cream: **MILK**; Salt), Sugar, Maize Starch, Rice Flour, Sugar Crunch Sparkle (Sugar, Water, Glazing Agent: E904; Colours: E172, E171; Glucose Syrup). Dark chocolate coating contains: cocoa solids 52% minimum.

Allergens: **MILK, SOYA, WHEAT.** Not suitable for nut & sesame allergy sufferers: may also contain traces of **EGG, MUSTARD, PEANUTS** and glutens sources (**OAT, SPELT, RYE, BARLEY**).

Storage: Store in a cool dry place avoiding direct sunlight. Once opened, keep in an airtight container and consume within 30 days.



Typical Value per 100g

Energy (kj):	2175
Energy (kcal):	520
Fat (g):	30
Fat of which saturates (g):	19
Carbohydrate (g):	56
Carbohydrate of which sugars (g):	26
Protein (g):	5.3
Salt (g):	0.41

Product Name: Filberts Dry Roasted Peanuts 40g**Ingredients:** PEANUT 94%, Sea Salt, Yeast Extract, Smoked paprika <1%, Onion powder, Ground Celery seed, Garlic Powder, Rapeseed oil.**Allergens:** PEANUTS, CELERY**Storage:** Ambient**Typical Value per 100g**

Energy (kj):	2434
Energy (kcal):	588
Fat (g):	47.7
Fat of which saturates (g):	4.5
Carbohydrate (g):	6.9
Carbohydrate of which sugars (g):	5.9
Protein (g):	27.6
Salt (g):	2.1

Product Name: Mrs Darlington Strawberry Jam 130g**Ingredients:** Sugar, Strawberries, Gelling Agent: Pectin, Lemon Juice.**Allergens:** N/A**Storage:** Refrigerate Once Opened.**Typical Value per 100g**

Energy (kj):	1124
Energy (kcal):	265
Fat (g):	0.1
Fat of which saturates (g):	0
Carbohydrate (g):	65.8
Carbohydrate of which sugars (g):	65.6
Protein (g):	0.4
Salt (g):	0

Product Name: Love Popcorn Sweet Popcorn Bag 27g

Ingredients: Air Popped Corn, Sugar, Rapeseed Oil

Allergens: Warning: popped kernels may be present in this product. made in an environment where **NUTS, DAIRY** and **WHEAT** are handled.

Storage: Store in cool, dry place

Typical Value per 100g

Energy (kj):	2134
Energy (kcal):	507
Fat (g):	21.6
Fat of which saturates (g):	1.8
Carbohydrate (g):	68.6
Carbohydrate of which sugars (g):	30.3
Protein (g):	5.6
Salt (g):	0.1

Product Name: House of Fudge Christmas Pudding Cracker 75g

Ingredients: Sugar, Glucose Syrup, **SWEETENED CONDENSED MILK**, Refined Vegetable Fat (Palm), Raisins, Glacé Cherries (Cherries, Sugar, Citric Acid (E330), Potassium Sorbate (E202, Erythrosine (E127), **SULPHUR DIOXIDE (E220)**), **BUTTER, CLOTTED CREAM**, Rum (contains colour E150a), Natural Flavouring, Emulsifier: **SOYA** Lecithin, Salt.

Allergens: **MILK, SULPHITES, SOYA** . May Contain Traces of **PEANUTS** and Tree **NUTS**

Storage: Store in a cool dry place.

Typical Value per 100g

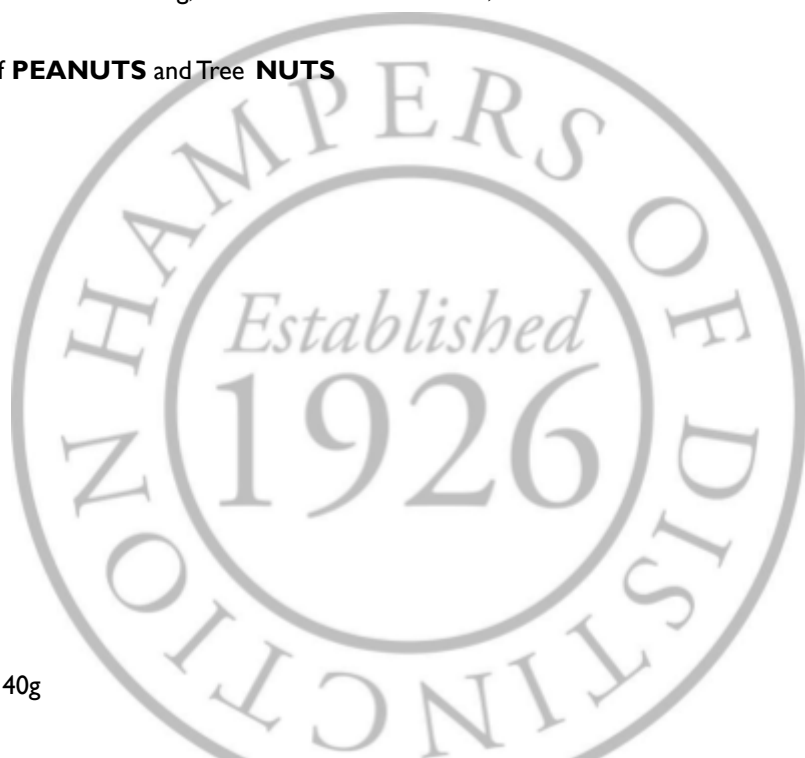
Energy (kj):	1667
Energy (kcal):	396
Fat (g):	12.4
Fat of which saturates (g):	6.7
Carbohydrate (g):	70.3
Carbohydrate of which sugars (g):	58.9
Protein (g):	0.8
Salt (g):	0.19

Product Name: Yorkshire Crisps Tomato, Basil & Mozzarella Bag 40g

Ingredients: Potatoes, Sunflower Oil, Whey Powder, Salt, Tomato Powder, Dried Cheddar Cheese (**MILK**), Dried Sour Cream (**MILK**), Dried Skimmed Milk (**MILK**), Dextrose, Sugar, Basil, Dried Balsamic Vinegar, Lactose (**MILK**), Yeast Extract, Dried Mozzarella Cheese (**MILK**), Dried Lemon Juice, Rapeseed Oil

Allergens: **MILK**

Storage: Cool, dry place



Typical Value per 100g

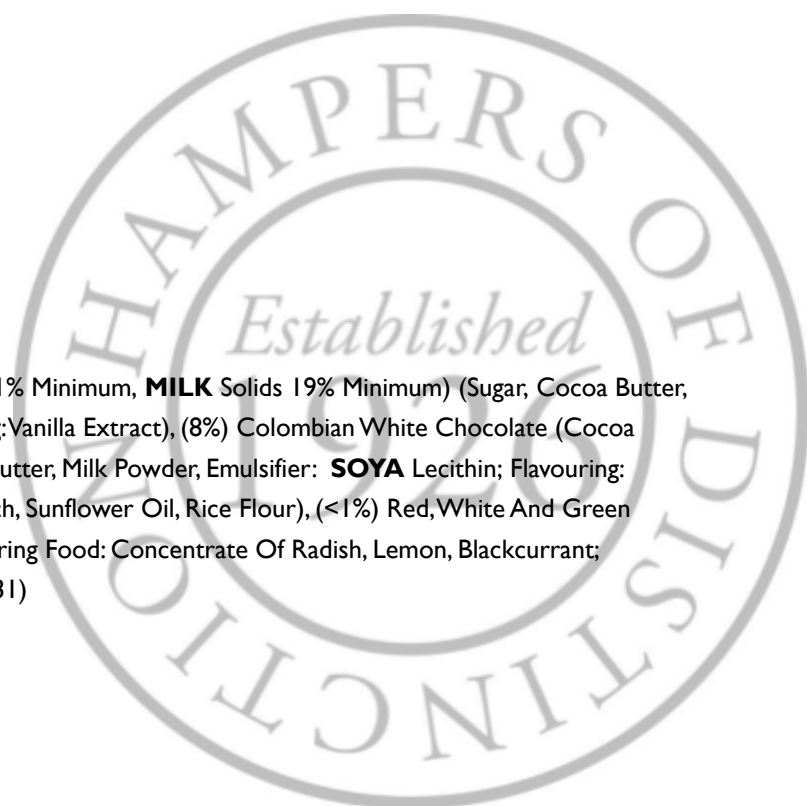
Energy (kj):	2148
Energy (kcal):	513
Fat (g):	24.4
Fat of which saturates (g):	5.8
Carbohydrate (g):	65.9
Carbohydrate of which sugars (g):	3.3
Protein (g):	7.5
Salt (g):	1.7

Product Name: Walkers Shortbread Festive Shapes Carton 60g**Ingredients:** **WHEAT** Flour (**WHEAT** Flour, Calcium Carbonate, Iron, Niacin, Thiamin), Butter (**MILK**) (32%), Sugar, Salt**Allergens:** **WHEAT, MILK.****Storage:** Store in a cool, dry place.**Typical Value per 100g**

Energy (kj):	2211
Energy (kcal):	529
Fat (g):	30.0
Fat of which saturates (g):	18.7
Carbohydrate (g):	58.2
Carbohydrate of which sugars (g):	16.5
Protein (g):	5.6
Salt (g):	0.68

Product Name: Thornton & France Christmas Tree 118g**Ingredients:** (88%) Colombian **MILK** Chocolate (Cocoa Solids 41% Minimum, **MILK** Solids 19% Minimum) (Sugar, Cocoa Butter, **MILK** Powder, Cocoa Mass, Emulsifier: **SOYA** Lecithin; Flavouring: Vanilla Extract), (8%) Colombian White Chocolate (Cocoa Solids 35% Minimum, **MILK** Solids 24% Minimum) (Sugar, Cocoa Butter, Milk Powder, Emulsifier: **SOYA** Lecithin; Flavouring: Vanilla Extract), (2%) Snowflake Sugar Sprinkles (Sugar, Potato Starch, Sunflower Oil, Rice Flour), (<1%) Red, White And Green Sugar Decorations (Sugar, **WHEAT** Starch, Glucose Syrup, Colouring Food: Concentrate Of Radish, Lemon, Blackcurrant; Vegetable Oil: Coconut; Glazing Agent: Beeswax; Colours: E100, E131)**Allergens:** **MILK, SOYA, WHEAT .****Storage:** Keep out of direct sunlight. Store in a cool, dry place.**Typical Value per 100g**

Energy (kj):	2376.92
Energy (kcal):	567.91
Fat (g):	38
Fat of which saturates (g):	22.66



Carbohydrate (g):	52.4
Carbohydrate of which sugars (g):	48.71
Protein (g):	6.6
Salt (g):	0.18

Product Name: Snow Mallows in Cone bag 175g

Ingredients: Glucose-Fructose Syrup, Sugar, Water, Porcine Gelatine, Dextrose, Corn Starch, Flavouring: Vanillin

Allergens: May contain traces of **MILK, LACTOSE, SOY** and **SOY** Oil

Storage: Store in a cool dry place

Typical Value per 100g

Energy (kj):	1418
Energy (kcal):	339
Fat (g):	0.5
Fat of which saturates (g):	0.1
Carbohydrate (g):	79
Carbohydrate of which sugars (g):	69
Protein (g):	3.1
Salt (g):	0.006

Product Name: Arden's Puff Pastry Christmas Trees 60g

Ingredients: **WHEAT** Flour, Butter (**MILK**), Emmental Cheese (**MILK**) (6%), Modified Maize Starch, Potato Starch, Salt, Yeast, Dried Onion (0.7%), Onion Powder (0.3%), Black Pepper, **MILK** Protein, Dextrose.

Allergens: **WHEAT, MILK**. May contain **NUTS, EGG, SESAME** and **SOYA**.

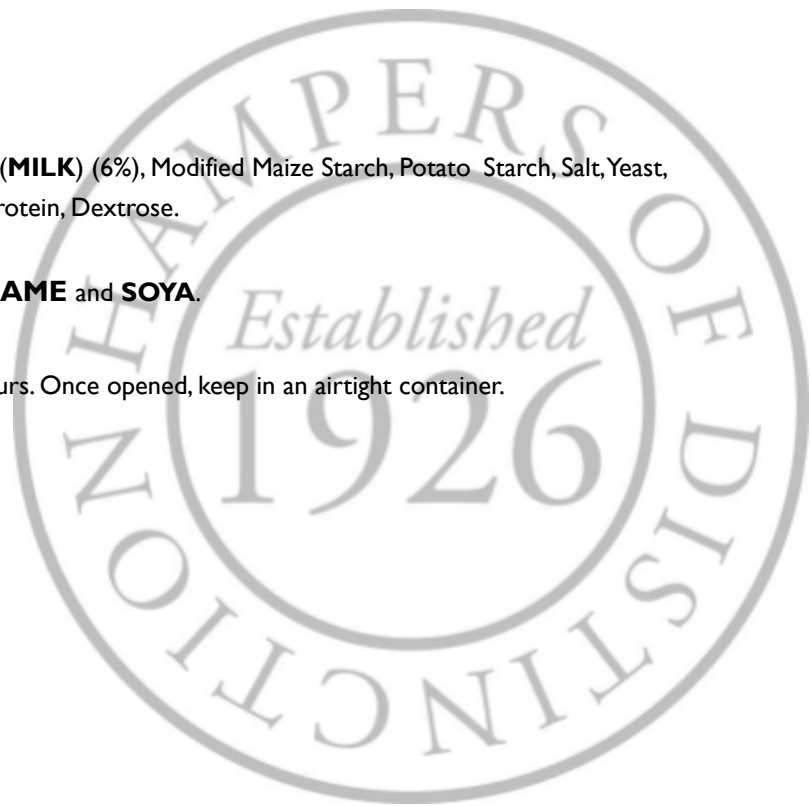
Storage: Store in a cool dry place away from strong light and odours. Once opened, keep in an airtight container.

Typical Value per 100g

Energy (kj):	2196
Energy (kcal):	526
Fat (g):	30.0
Fat of which saturates (g):	20.0
Carbohydrate (g):	51.0
Carbohydrate of which sugars (g):	3.0
Protein (g):	12.0
Salt (g):	1.7

Product Name: NibNibs Sun Dried Tomato Breadsticks 100g

Ingredients: **WHEAT** Flour (contains Calcium, Niacin, Iron, Thiamin), Durum **WHEAT** Semolina, Olive Oil (9.1%), Sun-dried Tomato Granules (6.1%) (Sun-dried Tomatoes, Salt), Basil, Salt, Yeast, Antioxidant: Rosemary Extract.



Allergens: WHEAT (GLUTEN)

Storage: Cool dry place

Typical Value per 100g

Energy (kj):	1830
Energy (kcal):	434
Fat (g):	11
Fat of which saturates (g):	1.5
Carbohydrate (g):	72
Carbohydrate of which sugars (g):	4
Protein (g):	10
Salt (g):	1.6

Product Name: Belgian Chocolate Snowballs 200g

Ingredients: Sugar, Vegetable Fat (Palm), **LACTOSE**, Cocoa Butter, Low Fat **MILK** Powder, Whole **MILK** Powder, Whey Powder (**MILK**), Shredded Coconut, Flavours, Emulsifier: Lecithins; Vanilla Points 0.02%

Allergens: **MILK**. May also contain traces of **NUTS**.

Storage: Store in a cool, dry place.

Typical Value per 100g

Energy (kj):	2383
Energy (kcal):	571
Fat (g):	36.3
Fat of which saturates (g):	23.1
Carbohydrate (g):	55.0
Carbohydrate of which sugars (g):	54.7
Protein (g):	5.8
Salt (g):	0.946

